

MEGA® High Performance Fuse

Rated 70V-SF51

RoHS



Description

MEGA® 70V High Performance SF51 automotive fuses employ diffusion pill technology to provide predictable time-delayed circuit protection. These MEGA fuses are ideal for protecting batteries, alternators, and heavy gauge wire harnesses that experience large inrushes of current. Use fuses with ampere ratings between 350 A and 500 A only for short circuit protection.

Features & Benefits

- Available with ampere ratings of 60 A to 500 A
- Interrupting rating of 2.5 kA at 70 VDC
- >1 MΩ open state resistance
- Operate at up to 125 °C
- Tin-plated copper alloy terminals
- PPA-GF33 housings with UL flammability ratings of HB
- M6 (9 Nm ±1 Nm) and M8 (20 Nm ±1 Nm) mounting holes
- Comply with ISO 20934 – Type SF51
- RoHS compliant
- 51 mm pitch prevents mistaken replacement with other types of high-current fuses
- High-contrast, color-coded ampere rating stamps on housings aid identification
- Available with two, one, or no mounting holes
- 51 mm pitch prevents mistaken replacement with other types of high-current fuses

Applications

- Cars and SUVs
- Trucks
- Buses
- Offroad vehicles
- Watercraft as approved by Littelfuse

Ordering Information

Part Number	Rating	Package Size	Bolt Size	Bolt Hole Qty
0998xxx.UX-2M8	60–500	500	M8	2
0998xxx.UX-1M8	60–500	500	M8	1
0998xxx.UX-2M6	60–500	500	M6	2
0998xxx.UX-1M6	60–500	500	M6	1
0998xxx.UX-NH	60–500	500	-	0

MEGA[®] High Performance Fuse

Rated 70V-SF51

Ratings

Part Number	Current Rating (A)	Font Color	Test Cable Size (mm ²)	Typ. Voltage Drop (mV)	Typ. Cold Resistance (mΩ)	Typ. I ² t (A ² s)
0998060_	60	Blue	6	75.5	0.90	22 800
0998080_	80	Red	10	88.0	0.75	34 900
0998100_	100	Yellow	10	66.7	0.46	24 000
0998125_	125	Green	16	70.4	0.37	38 000
0998150_	150	Orange	25	70.6	0.32	58 100
0998175_	175	White	25	79.2	0.28	79 300
0998200_	200	Light Blue	35	76.9	0.24	123 600
0998225_	225	Light Orange	35	76.6	0.21	142 500
0998250_	250	Pink	50	66.0	0.17	220 000
0998300_	300	Grey	50	46.9 ²	0.15	340 000
0998350_	350 ¹	Dark Green	50	50.7 ²	0.14	495 000
0998400_	400 ¹	Purple	70	50.1 ²	0.12	872 000
0998450_	450 ¹	Gold	70	52.9 ²	0.10	1 224 000
0998500_	500 ¹	Brown	70	56.3 ²	0.09	1 800 000

¹ Short Circuit Protector only

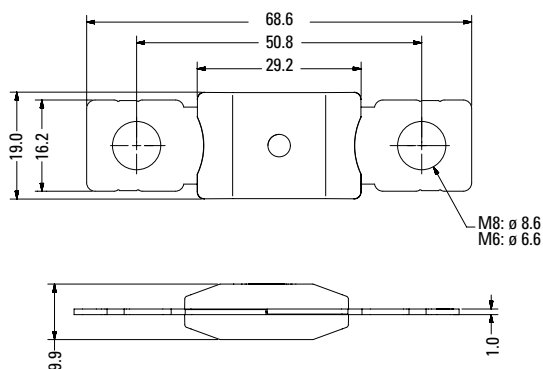
² Voltage Drop measurements for short circuit protectors taken at 75% of rated current.

The I²t value is calculated from the breaking capacity tests by using the current time profile before the arcing occurs.

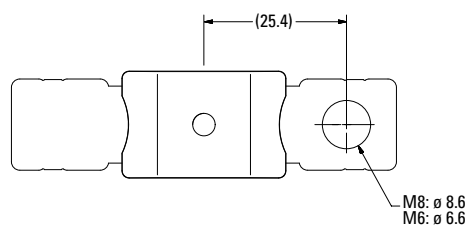
Dimensions

Dimensions in mm. Please refer to the outline drawing for dimensions and tolerances.

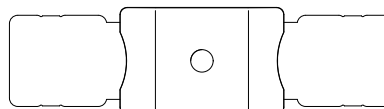
MEGA HP SF51 2 Holes M8/M6 versions



MEGA HP SF51 1 Hole M8/M6 versions



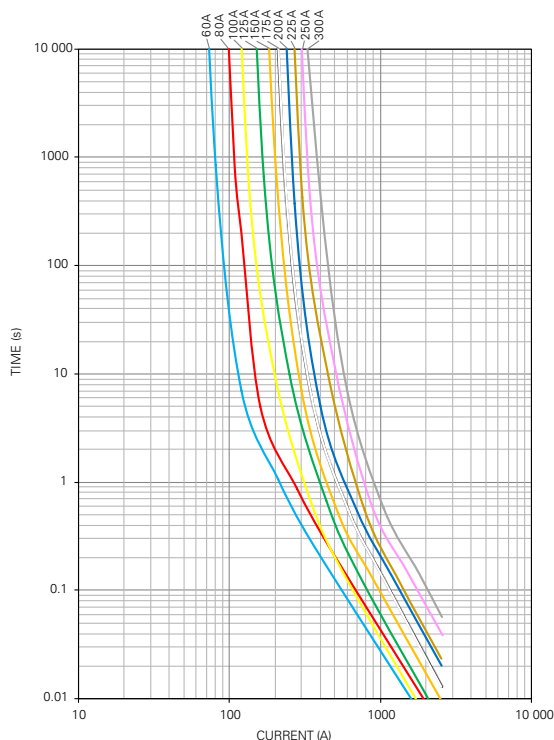
MEGA HP SF51 No-Holes version



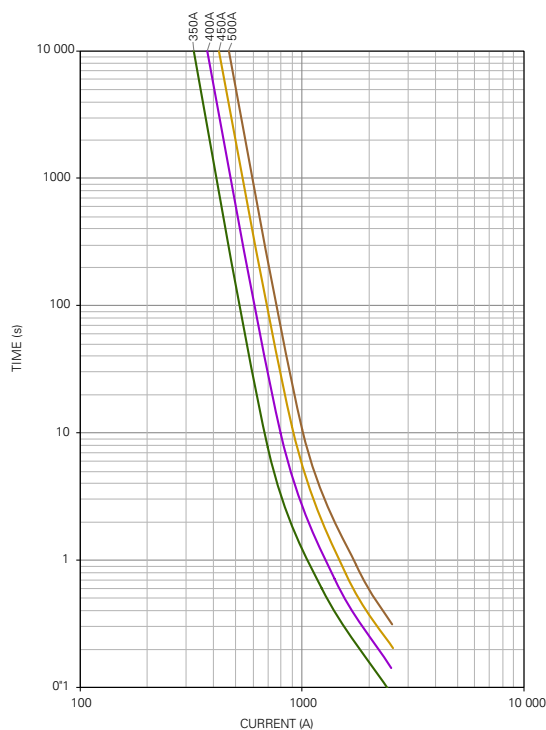
MEGA® High Performance Fuse

Rated 70V-SF51

Time-Current Characteristic



% of Rating	Opening Time Min / Max (s)		
	60-250	300	350-500
75	- / -	14 400 / ∞	14 400 / ∞
100	14 400 / ∞	- / -	- / -
135	120 / 1800	120 / 1800	- / -
150	20 / 450	20 / 450	- / -
200	1 / 15	1 / 15	1 / 15
350	0.3 / 5	0.3 / 5	0.5 / 5
600	0.1 / 1	0.1 / 1	0.1 / 1

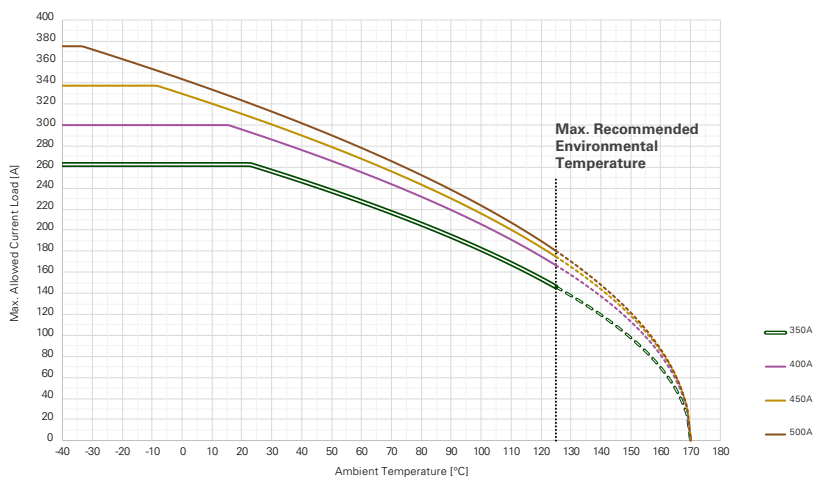
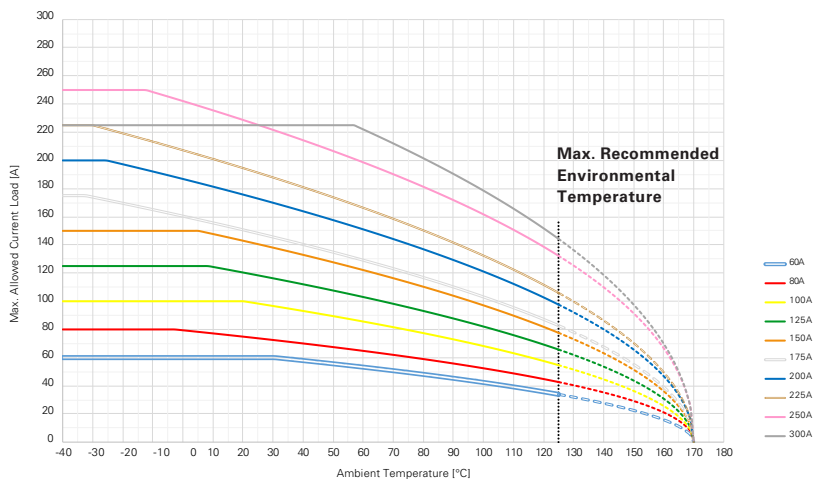


MEGA® High Performance Fuse

Rated 70V-SF51

Typical Derating Curves

Please contact Littelfuse® for Details Regarding Derating Test Set Up



Derating curves may change depending on the final condition of the application (terminals characteristics, wire size etc...). Please ask Littelfuse for more information.

Max. allowed current load (A) at ambient temperature (typical derating)							
	-40 °C	0 °C	20 °C	65 °C	85 °C	110 °C	125 °C
60A	60	60	60	52	47	39	34
80A	80	79	75	63	57	49	43
100A	100	100	100	84	75	63	55
125A	125	125	120	101	90	76	66
150A	150	150	143	119	107	90	78
175A	175	160	151	126	114	95	83
200A	200	187	176	148	133	112	98
225A	225	207	195	163	146	123	106
250A	250	242	229	194	177	151	132
300A	225	225	225	217	196	166	144
350A	263	263	263	222	200	168	146
400A	300	300	296	250	226	191	167
450A	338	330	311	262	237	201	175
500A	375	344	323	272	246	207	180

Current recommendation may be impacted by the final condition of the application (terminals characteristics, wire size etc...). Please contact Littelfuse® for more information.