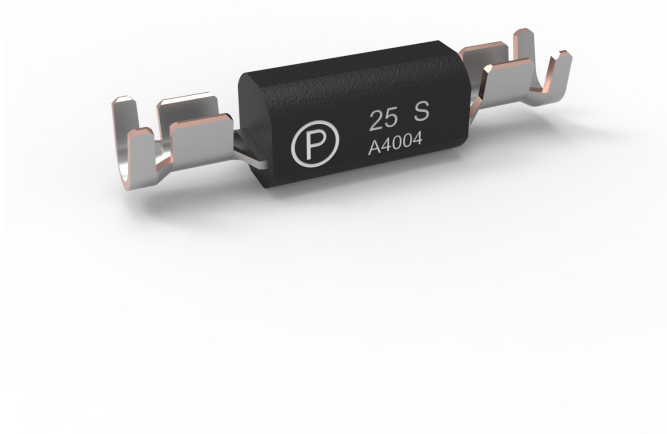


# BF-INLINE

Rated 32V



## Description

Install BF Inline fuses along insulated wires that have cross-sections of between 10 mm<sup>2</sup> and 35 mm<sup>2</sup>. Please know that these cable fuses only work when both of their terminals connect to wires carrying up to 32 volts. Also, these automotive inline fuses must be insulated by self-adhesive shrinking tubes. Littelfuse recommends using DERAY-IAKT 4:1, 24 mm tubes.

## Specifications

<b>Voltage Rating:</b>	32 VDC
<b>Interrupting Rating:</b>	2000 A @ 32 VDC
<b>Recommended Environmental Temperature:</b>	-40°C to +125°C
<b>Terminals Material:</b>	Tin plated Copper alloy
<b>Housing Material:</b>	PET-GF30
<b>Insulating Housing Material:</b>	PA-GF30

## Applications

- Cars
- Trucks
- SUVs
- Offroad vehicles
- Buses
- Watercraft as approved by Littelfuse®

## Features & Benefits

- Crimped Terminals ensure secure connections
- Break overloaded circuits along the wire to protect equipment

## Ordering Information

Part Number	Package Size
153.0000	300

# BF-INLINE

Rated 32V

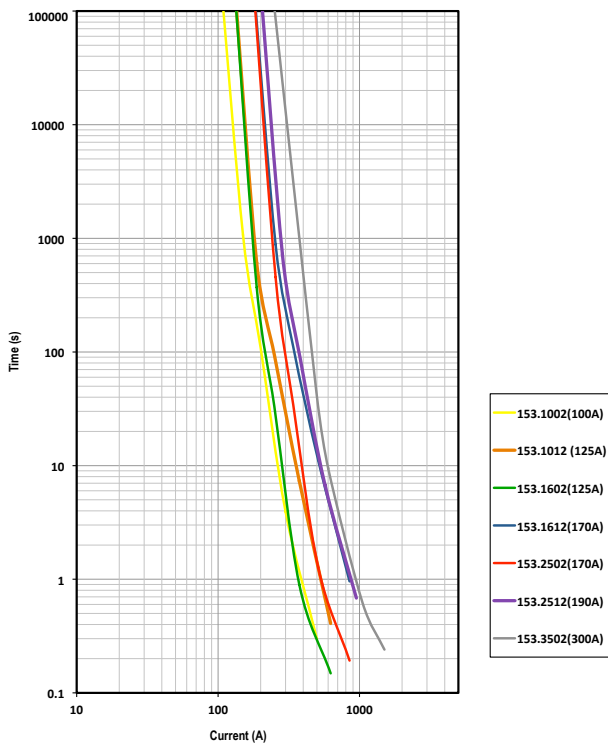
## Ratings

Part Number	Current Rating (A)	Wire Size/Type/Marking	Typ. Voltage Drop (mV)	Cold Resistance (mΩ)	I <sup>2</sup> t (A <sup>2</sup> s)
153.1002	100	10mm <sup>2</sup> /FLY/P	60	0.42	27,000
153.1012	125	10mm <sup>2</sup> /FL2G/S	70	0.32	87,500
153.1602	125	16mm <sup>2</sup> /FLY/P	75	0.41	29,600
153.1612	170	16mm <sup>2</sup> /FL2G/S	60	0.22	248,000
153.2502	170	25mm <sup>2</sup> /FLY/P	70	0.29	78,500
153.2512	190	25mm <sup>2</sup> /FL2G/S	52	0.22	248,000
153.3502	300	35mm <sup>2</sup> /FLY/P	70	0.20	373,000

# BF-INLINE

Rated 32V

## Time-Current Characteristic Curves



## Time-Current Characteristics

% of Rating	Opening Time Min / Max (s)	
	100 A - 190 A	100 A - 190 A
100	360,000 / -	360,000 / -
150	90 / 1800	10 / 100
200	3 / 240	1 / 15
300	0.3 / 60	0.3 / 5
500	0.1 / 10	0.1 / 1