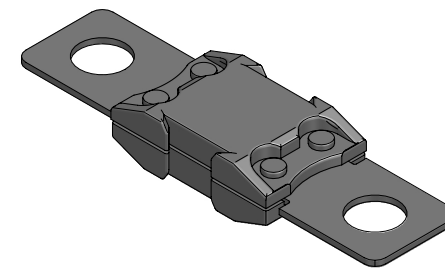
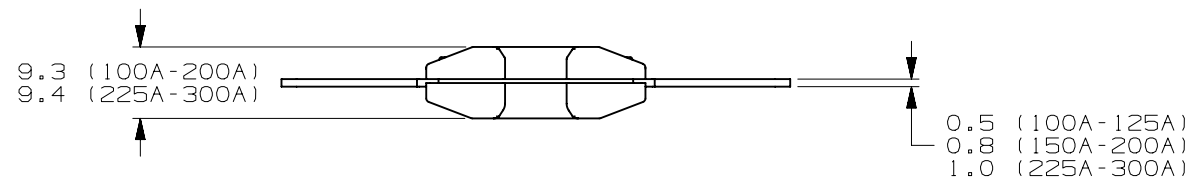
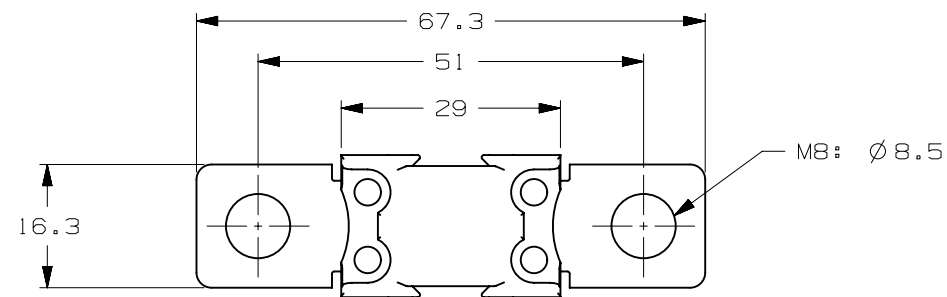


CURRENT RATE [A]	VERSIONS AND PART NUMBERS
	M8 2 HOLES
100	142.5395.6101
125	142.5395.6121
150	142.5395.6151
175	142.5395.6171
200	142.5395.6201
225	142.5395.6221
250	142.5395.6251
300	142.5395.6301

LTR	DATE	REVISION	DRW
A	01/FEB/23	526136GCA - INITIAL RELEASE	OPL



ISOMETRIC VIEW



BF2 58V						
TERMINAL MATERIAL:	COPPER ALLOY					
TERMINAL PLATING:	TIN					
HOUSING MATERIAL:	PET-GF33 (U.L. 94 FLAMMABILITY RATING - V0)					
CLEAR TOP HOUSING MATERIAL:	PES (U.L. 94 FLAMMABILITY RATING - V0)					
LINEAR DIMENSIONS				ANGLES	RADII	
DIM	.5 - 6	6 - 30	30 - 120	120 - 400	±0.5°	±0.2
TOL	±0.1	±0.2	±0.3	±0.5		
3RD ANGLE PROJECTION		Littelfuse®		REVISION	DRWG. NO.	
		CHICAGO, USA 773-628-1000		A	WEB-142.5395.0000	